

FastReporter

DATA POST-PROCESSING SOFTWARE



The one-stop solution for data post-processing and reporting productivity.

KEY FEATURES

Consolidated management and reporting tool for connector endface inspection and all types of optical-layer testing: optical link mapper (iOLM), OTDR, ORL, loss, PMD and chromatic dispersion (CD)

Most intuitive graphical user interface (GUI)

Live templating for OTDR testing

Powerful batch processing

Faster-than-ever bidirectional batch analysis

Automatic tool for duplicated measurement verification



SPEC SHEET



Assessing
Next-Gen Networks

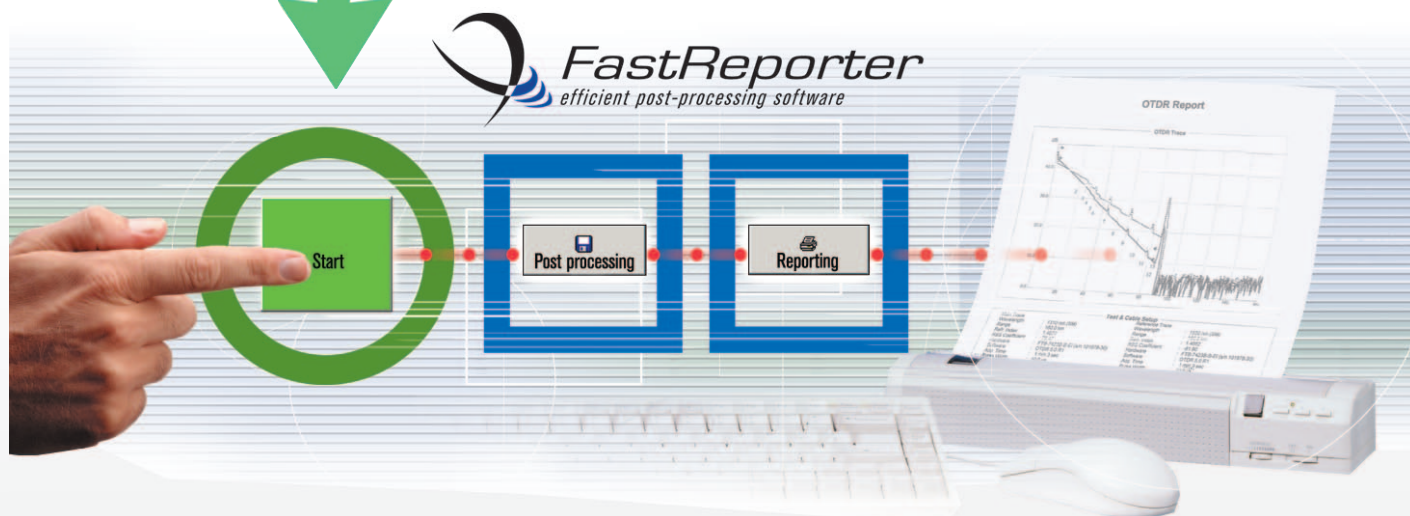
OPTICAL DATA POST-PROCESSING: ONE SOFTWARE DOES IT ALL

From handheld loss, ORL and OTDR testing to advanced optical characterization—including PMD and CD—the analysis of fiber-optic T&M data presents various challenges:

- › A multitude of files to analyze
- › The manual addition and removal of events in OTDR files
- › The need to integrate different measurements in one report
 - OTDR, loss, ORL, CD and PMD
 - OTDR and FIP (ConnectorMax)
 - iOLM and FIP (ConnectorMax)
- › The customization of reports

EXFO's FastReporter software package provides you with the post-processing tools and functionalities you need to meet such challenges, whatever the application. Designed for off-line analysis of field-acquired data, FastReporter offers a user-friendly environment, which contributes to boosting productivity.

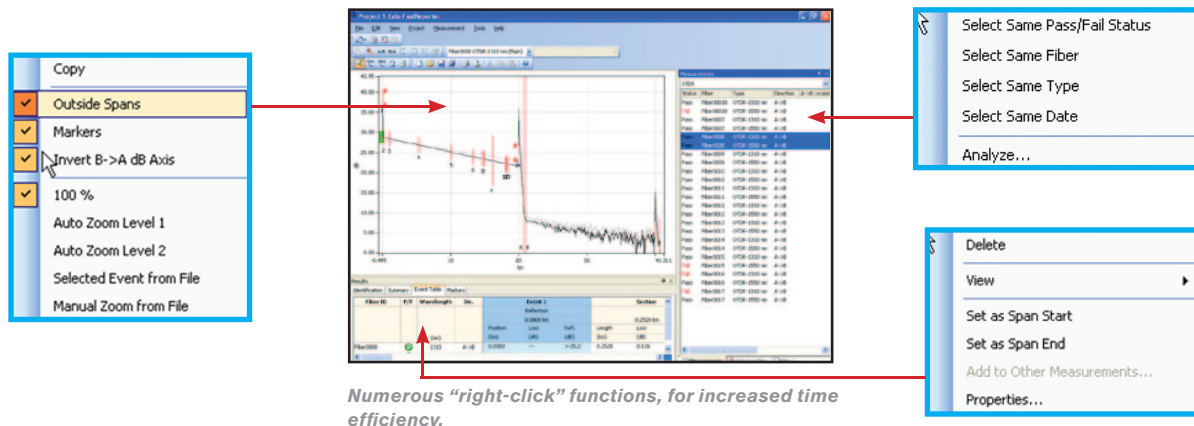
Out there in the field, data-processing efficiency is what you're looking for. Being able to rely on a single software to manage data and generate reports for all your optical-layer test applications is your solution to true time efficiency and high productivity.



USER-FRIENDLY INTERFACE

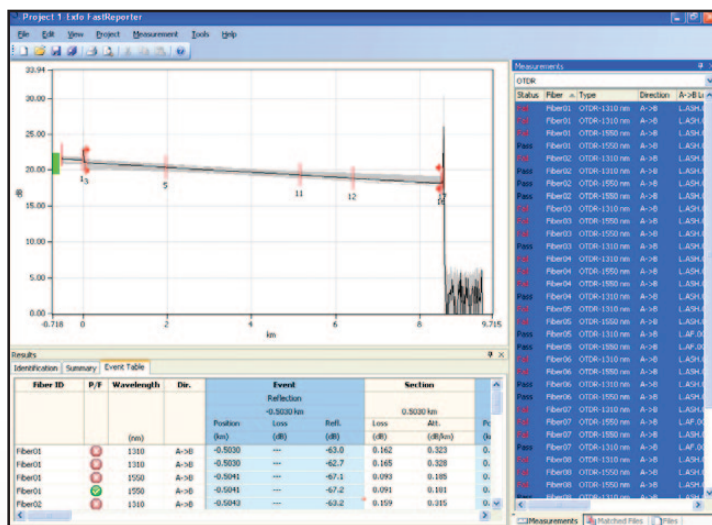
Windows-Based Functions

Minimize the training time for your technicians, thanks to a familiar, highly intuitive software environment.

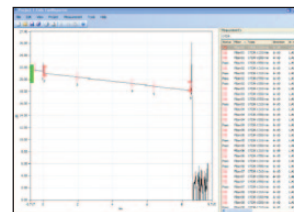


Customizable View

Use the Pin icons to hide or restore the "Results" and "Measurements" sections of the screen, as seen on the right-hand examples.



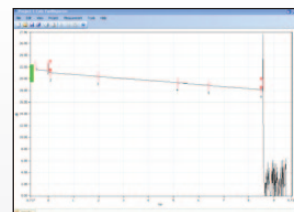
Graph, results and measurements.



Graph and measurements.

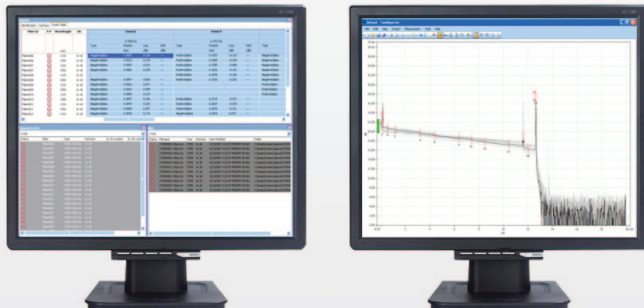


Graph and results.



Graph only.

Get a clearer view of your graphs and data by using the dual-monitor display feature.



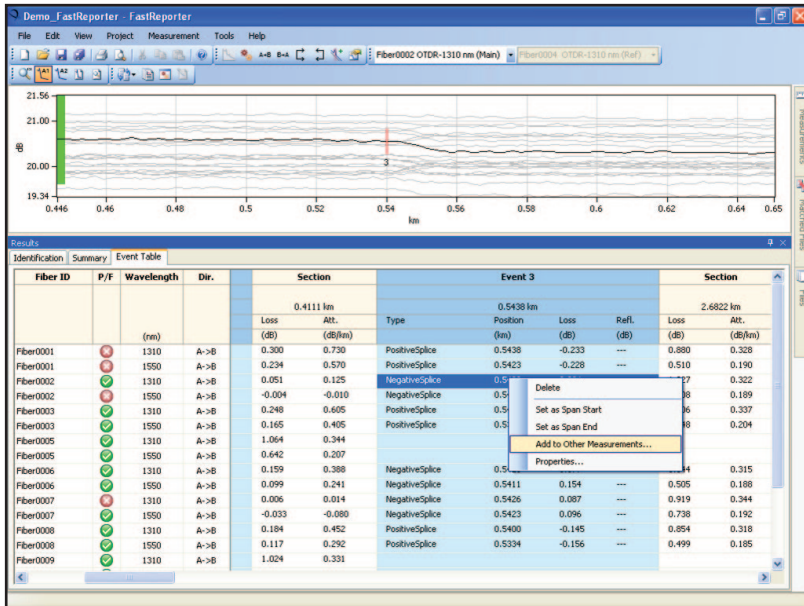
Use two monitors, one for the data, one for the graphic.

LIVE TEMPLATING FOR OTDR TESTING

One-Step File Management at Any Wavelength

► Keep full control: add/remove events manually

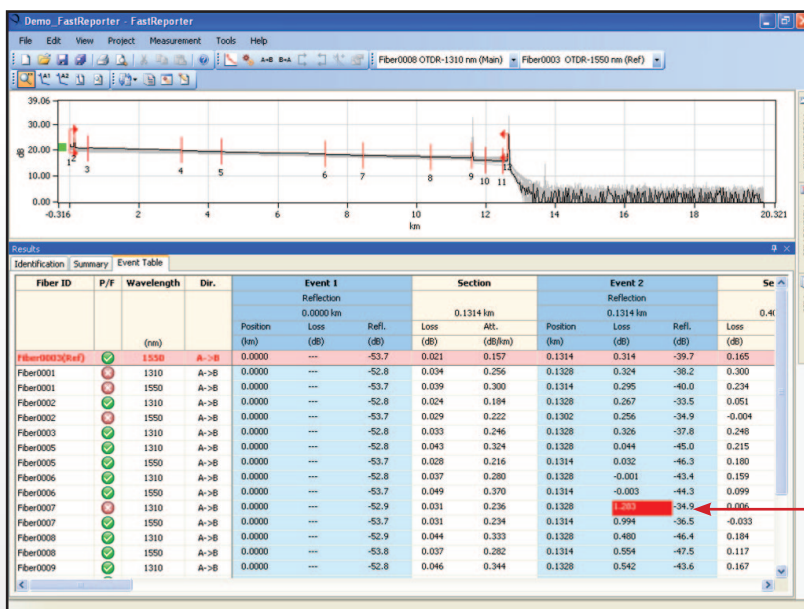
Add a specific event to all measurements selected at all wavelengths. Simply right-click on the event and select “Add to other measurements”.



Manual file management.

► Add/remove events automatically using a reference

All events from the reference will be added to all fibers. Standardize measurements for all fibers from a given cable—in just a few seconds.



Failed event (loss value) vs. set threshold.

Automated file management.

POWERFUL BATCH PROCESSING

FastReporter includes a powerful tool that automates repetitive operations on large numbers of OTDR test files. You can process an unlimited number of files in a session, and combine single operations into multi-operation batch sessions. In a nutshell, FastReporter optimizes your productivity.

> Batch documentation

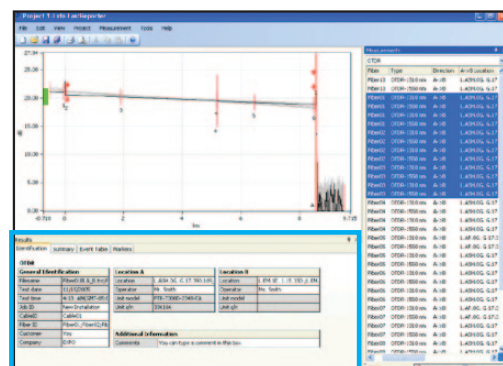
- Document an entire cable/project in a matter of seconds
- Save time in the field by documenting your files at the office
- Manage different measurements simultaneously

> Get uniformity in your results

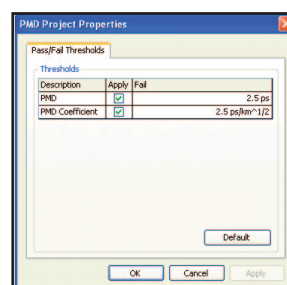
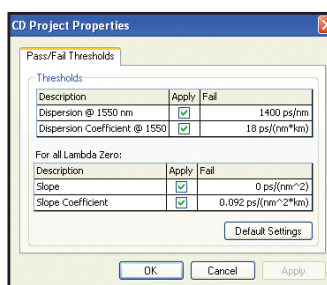
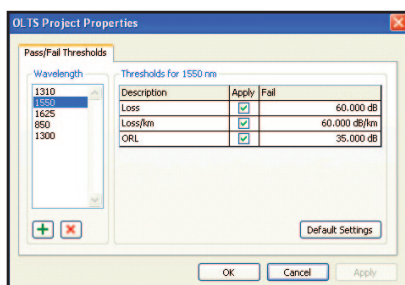
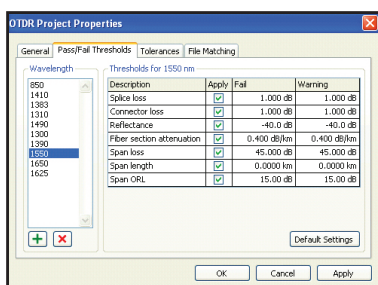
- Adjust cable and fiber parameters
- Set detection thresholds for all measurements at once

> Batch analysis

- Adjust parameters for all cables at once
- Adjust detection thresholds
- Set pass/fail thresholds for **iOLM**, **OTDR**, **OLTS**, **CD** and **PMD** testing and characterize your link. Make sure you meet the link's requirements.



Batch documentation.



> Universal OTDR file compatibility

- Open files from other vendor's equipment
- Perform batch conversion of file formats



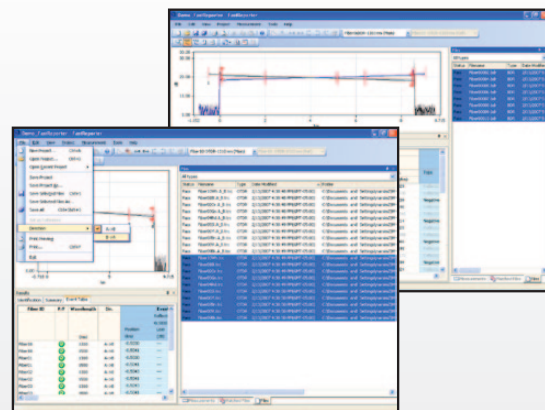
BIDIRECTIONAL BATCH ANALYSIS

> Analyze an entire cable in two steps

1. Set your direction (A to B, or B to A)
2. Create your bidirectional file

> Get all the needed info on a single screen

- View data for all events on all fibers, and at each wavelength



Bidirectional batch analysis.

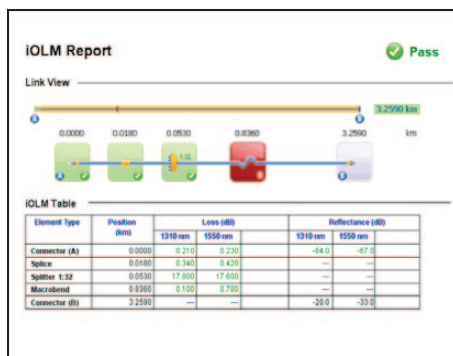
FLEXIBLE REPORTING

Document Your Work

Advanced reporting and batch processing capabilities are available through our FastReporter data post-processing software, including combined OTDR and FIP reports.

> Various report templates to choose from

- ✓ Loss and ORL (including EXFO's FasTesT function)
- ✓ OTDR
- ✓ PMD
- ✓ CD
- ✓ Fiber characterization
- ✓ Cable report
- ✓ OTDR and FIP
- ✓ iOLM
- ✓ iOLM and FIP



iOLM report.

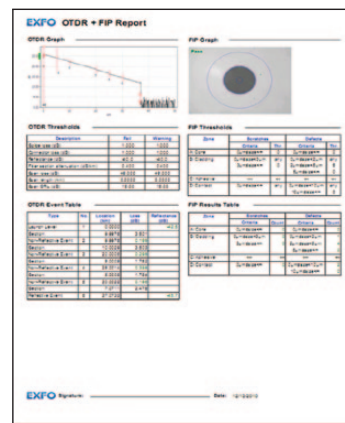
Fiber Characterization Report

General Information: Cable ID: Cable 012, Customer: Telecom Company, Company: EXFO

Fiber Characterization

Fiber ID	CD @ 1550 nm	PMD	OLTS	OTDR
01	233.54	0.01	0.04	1000
02	234.23	0.02	0.03	1000
03	237.21	0.03	0.04	1000
04	233.84	0.01	0.03	1000

Fiber characterization report.



OTDR and FIP report.

> Report customization

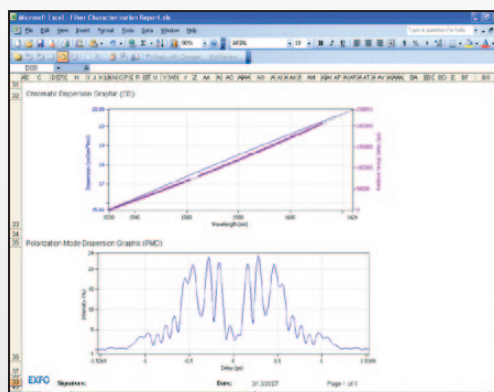
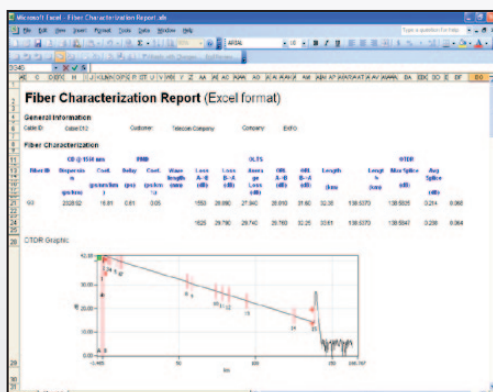
Create your own report template with external reporting software such as Crystal Reports®.

> Format saving

Easily create comprehensive PDF, Excel or HTML reports, with no additional formatting.

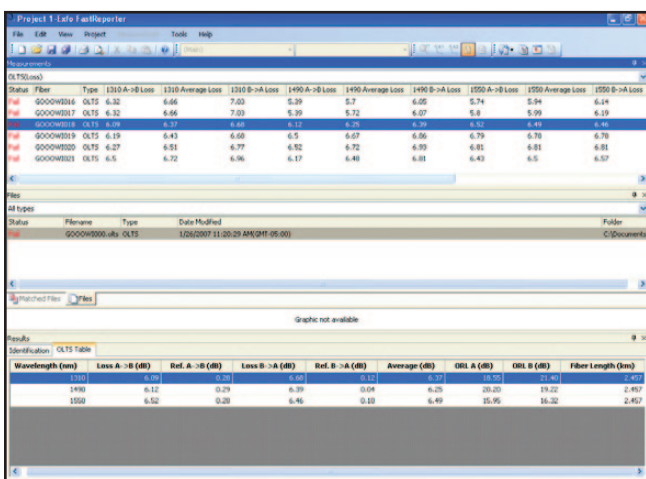
> Copy Graph function

Customize your reports by integrating your graphs into documents such as Excel, Word, etc.

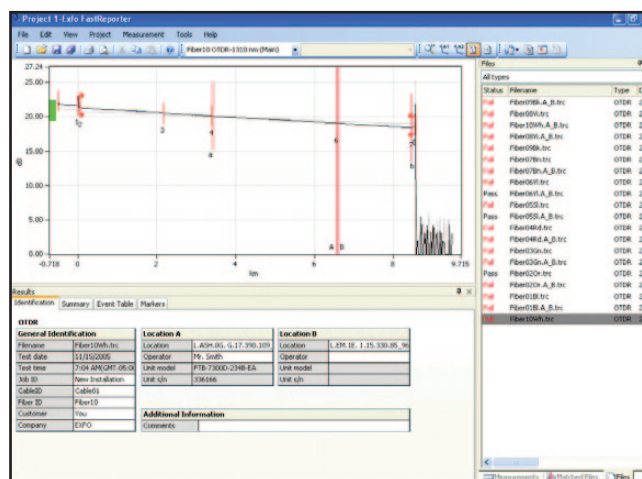


COMPATIBLE WITH VARIOUS EXFO TEST INSTRUMENTS

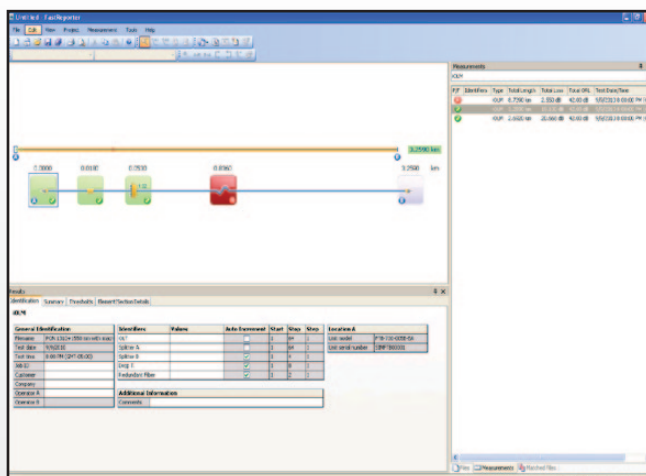
FastReporter processes optical test data collected from the FTB-500, FTB-200 and FTB-1 platforms (FTB modules), as well as from handheld units.



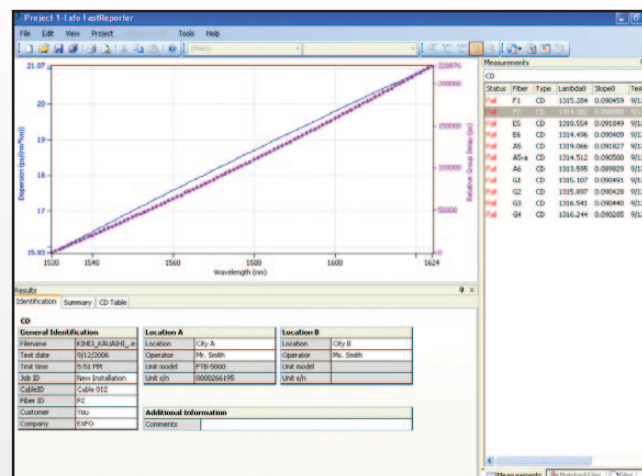
OTLS results (FOT-930, FTB-3930).



OTDR results (FTB-7000 series).



IOLM results.



CD results (FTB-5800).

SYSTEM REQUIREMENTS

System Element	Minimum Requirement (Windows XP)	Minimum Requirement (Windows Vista, 32 and 64 bit)	Minimum Requirement (Windows 7, 32 bit)	Minimum Requirement (Windows 7, 64 bit)
Processor	Pentium (1.6 GHz or higher recommended)	Pentium (1.6 GHz or higher recommended)	Pentium (1.6 GHz or higher recommended)	Pentium (1.6 GHz or higher recommended)
RAM	256 MB (1 GB recommended)	512 MB (2 GB recommended)	1 GB (4 GB recommended)	2 GB (4 GB recommended)
Disk space	400 MB			
Monitor	One super VGA (800 X 600) monitor (two 1024 X 768 monitors recommended)			
Other requirements	Network adapter Microsoft Internet Explorer version 6.0 or later Microsoft 2000 or later to open .xls files			

ORDERING INFORMATION

FastReporter-X

Model

FastReporter-A = English
 FastReporter-C = Chinese (simplified)
 FastReporter-F = French
 FastReporter-G = German
 FastReporter-R = Russian
 FastReporter-E = Spanish

EXFO Corporate Headquarters > 400 Godin Avenue, Quebec City (Quebec) G1M 2K2 CANADA | Tel.: +1 418 683-0211 | Fax: +1 418 683-2170 | info@EXFO.com

Toll-free: +1 800 663-3936 (USA and Canada) | www.EXFO.com

EXFO America	3400 Waterview Parkway, Suite 100	Richardson, TX 75080 USA	Tel.: +1 972 761-9271	Fax: +1 972 761-9067
EXFO Asia	100 Beach Road, #22-01/03 Shaw Tower	SINGAPORE 189702	Tel.: +65 6333 8241	Fax: +65 6333 8242
EXFO China	36 North, 3 rd Ring Road East, Dongcheng District Room 1207, Tower C, Global Trade Center	Beijing 100013 P. R. CHINA	Tel.: + 86 10 5825 7755	Fax: +86 10 5825 7722
EXFO Europe	Omega Enterprise Park, Electron Way	Chandlers Ford, Hampshire S053 4SE ENGLAND	Tel.: +44 23 8024 6810	Fax: +44 23 8024 6801
EXFO NetHawk	Elektronikkatie 2	FI-90590 Oulu, FINLAND	Tel.: +358 (0)403 010 300	Fax: +358 (0)8 564 5203
EXFO Service Assurance	270 Billerica Road	Chelmsford, MA 01824 USA	Tel.: +1 978 367-5600	Fax: +1 978 367-5700

EXFO is certified ISO 9001 and attests to the quality of these products. This device complies with Part 15 of the FCC Rules. Operation is subject to the following two conditions: (1) this device may not cause harmful interference, and (2) this device must accept any interference received, including interference that may cause undesired operation. EXFO has made every effort to ensure that the information contained in this specification sheet is accurate. However, we accept no responsibility for any errors or omissions, and we reserve the right to modify design, characteristics and products at any time without obligation. Units of measurement in this document conform to SI standards and practices. In addition, all of EXFO's manufactured products are compliant with the European Union's WEEE directive. For more information, please visit www.EXFO.com/recycle. Contact EXFO for prices and availability or to obtain the phone number of your local EXFO distributor.

For the most recent version of this spec sheet, please go to the EXFO website at www.EXFO.com/specs.

In case of discrepancy, the Web version takes precedence over any printed literature.